

IFS APPLICATIONS

A Solution for the Agile Enterprise

An agile company has a distinct business advantage. Instead of being left behind by market changes, it can rapidly respond and possibly lead the market by smoothly adjusting its processes and/or offerings. Or it can expand into new markets as opportunities arise. Agility is the ability to change and the key to continuous profitability.

IFS Applications supports change by being flexible and easy to adapt. As it is built with components, you can easily expand your software solution as your needs change. The Service-Oriented Architecture (SOA) makes integration, communication, and cooperation easier – with customers as well as partners.

IFS Applications can co-exist with other applications in a superior way when best-of-breed point solutions are required to effectively support a process. So there is no need to change all of your existing systems just because you need new software. Keep those that you are happy with, and add the IFS Applications components you need to get a competitive advantage.

With IFS Applications, components and SOA are not the functionality of the future. They are a reality, and are already enabling companies to be agile now.

Designed for Purpose

Component-based architecture has been an integral part of IFS Applications since the beginning. This has enabled IFS to develop a complete business application suite and an industry-specific solution in one. By combining industry-specific components, developed in close cooperation with customers and leading industry partners, with standard components, IFS is able to offer a solution that is designed for your industry and that still covers your entire business – without costly and time-consuming customizations and modifications.

Another benefit of using customer-centric component development is the ability to focus on the end user from the very beginning. Components are designed with specific business processes in mind, but are still easily integrated with the rest of the system. Users see the information they need, and are prompted to act upon it as required. As the design is based on their situation, the end users can operate more quickly – whether on the shop floor or in the finance department.

IFS Applications takes usability and user productivity one step further. By allowing the users themselves to configure their interface, it becomes possible to customize the system down to the individual level – and thereby even further increase user efficiency.

Sharpening your Competitive Focus

Agility and sustainable competitiveness are increasingly based on specialization and a focus on core competencies. Every company has a number of critical success factors that can either become competitive advantages by adding unique business skills that cannot be copied by competitors, or they can remain on par with the industry, following good, or even best, practice. Often, these success factors are connected to the ingrained core competencies and values that are manifested in your company's mission statement and corporate ethos. IFS Applications supports you in raising your critical success factors from industry parity to industry leadership regardless of whether your focus is on customers, assets, projects, contracts, products, services or supply chains.

Reducing the Total Cost of Agility

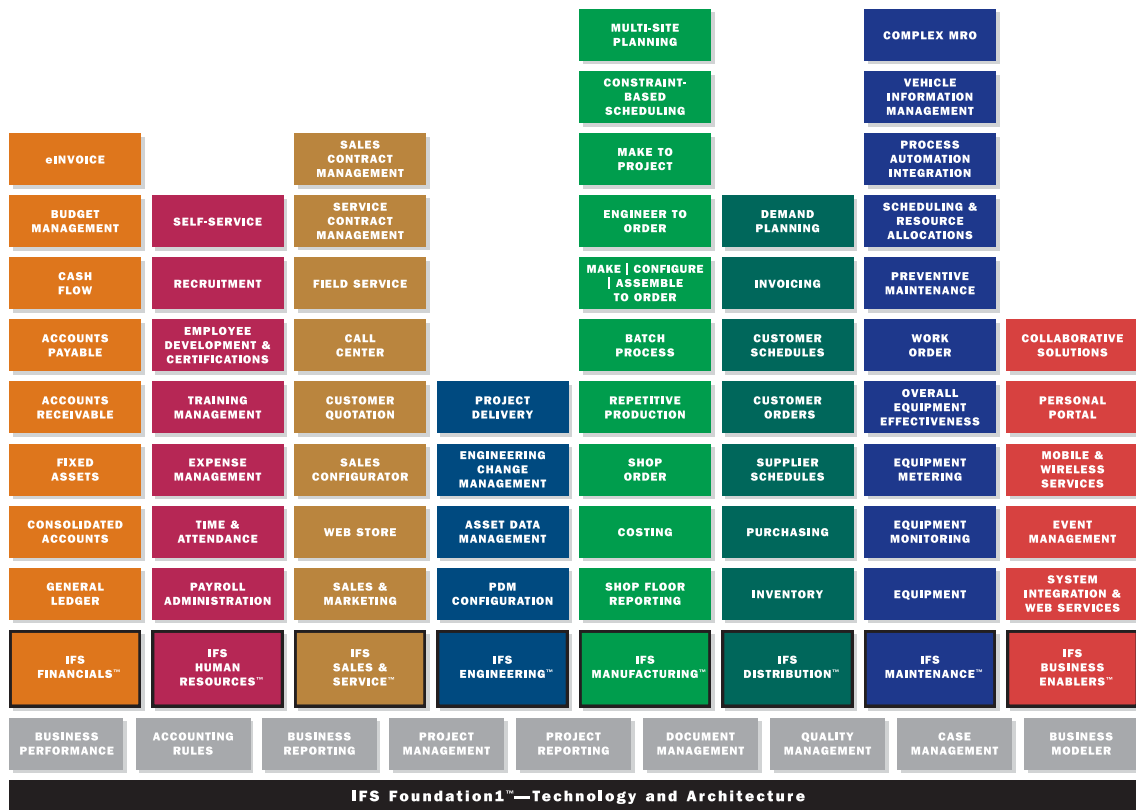
With IFS Applications you are not locked in. Upgrading, adding new technology, integrating new solutions, or adding new components is both easy and cost-effective. With a truly component-based business application suite, you have the option to choose and to change without having to make large investments. With IFS Applications, you get the agility to move to the fore – and stay there.

IFS Applications

IFS Applications is the logical choice for the modern company that wants agility. With IFS Applications, companies get a flexible solution that can easily be configured to meet their demands, and that can evolve as markets, legislation, or conditions change. The component-based solution allows gradual implementation, leading to a smooth upgrade of the IT environment. Companies can focus on the areas that are most critical today, and then implement or upgrade other parts as needs arise, minimizing risks and reducing total cost of ownership (TCO).

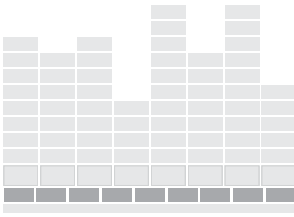
IFS Applications combines the use of components, which have been the basic structure of the system since the very beginning, with the latest in application architecture. While others see service-oriented architecture (SOA) as the future of the business software industry, IFS Applications already has it in place. Having the flexibility to use many different technologies, such as J2EE™ and .NET, makes IFS Applications easier to integrate, giving you freedom of choice.

By combining industry-specific and functional components, IFS Applications provides a complete solution for companies in targeted industries. Users get IT support designed for their specific work flows, and the entire enterprise works with the same information, without costly customizations or painful integrations.



Business is easier with IFS Applications. Because it is truly component-based, companies can implement what they need, when they need it. IFS Applications offers business solutions that can be configured to meet the needs of rapidly changing industries facing challenges in an international marketplace.

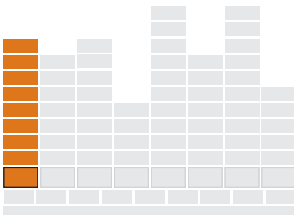
Cross-Functional Components



IFS' cross-functional components are a set of extremely powerful components designed for streamlining, simplifying and handling critical processes found within most industries and businesses. These processes include business performance, customer relationship management, supply chain management, business modeling, as well as document, quality and project management.

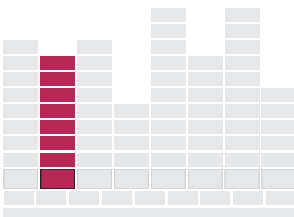
IFS Business Modeler lets companies view their organization in terms of business processes. Through its PC-based tools, methods, and graphical models that make it easier to match a company's existing processes with the best-practice processes that IFS Applications supports, it gives insight into ways to re-engineer businesses to be more efficient, more profitable and focused on customer satisfaction.

Finance Components



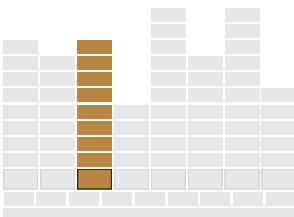
IFS' financial components give you a comprehensive view of your business from a variety of perspectives. When you spot a trend worth investigating, you can zoom in on the appropriate financial transactions and scrutinize them in detail. These components enhance control at all levels of the organization, and support change processes, no matter what business you are in.

Human Resources Components



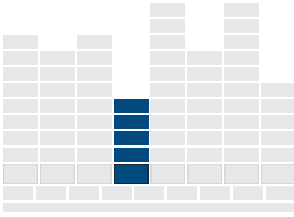
IFS' human resources components save time and money by helping you manage your company's most valuable resources most cost-effectively. These components provide fast, accurate analysis, meeting all your company's key needs for personnel development. The human resources components are essential for successful strategic human resource planning.

Sales & Service Components



IFS' sales and service components are an important part of any solution for customer relationship management (CRM). These components manage the customer interaction chain from the sales lead, through the sales cycle, to the ongoing support and service of the customer. IFS' sales and service concept is a result of the increased focus on the customer lifecycle and the business potential in after-market services.

Engineering Components



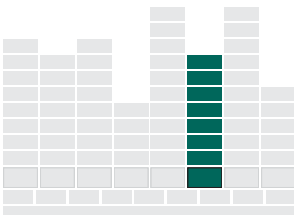
IFS' engineering components make it easier to specify and configure design elements and products. The components ensure quality by streamlining the administration of all related documentation, including revisions. Everyone in the organization gets the information they need, providing continuously updated data for technical, administrative, and financial decisions.

Manufacturing Components



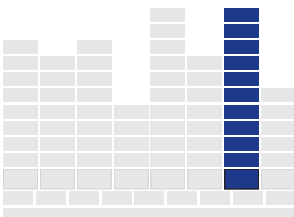
IFS' manufacturing components provide a simple, highly automated flow for taking care of repetitive tasks along with advanced management-by-exception functionality for vital exceptions. This powerful, multifaceted solution supports planning, execution, control, and analysis in most types of manufacturing, in all phases of the manufacturing process, and for all employees in the organization. It also supports mixed-mode manufacturing and lean principles.

Distribution Components



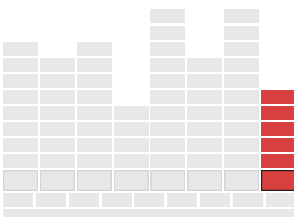
IFS' distribution components, together with manufacturing, form the basis of your supply chain management solution. These components offer the simplicity you need to better visualize product flows and use the system efficiently and you can easily adapt to different distribution models and working methods. They give you the adaptability you need to grow and support change throughout your enterprise and lets you take advantage of real-time communication throughout the order-to-delivery chain.

Maintenance Components



IFS' maintenance components are part of a complete enterprise asset management (EAM) system that enables you to anticipate and adapt to the rapidly changing demands of the world around you. Easy to work with and access, the solution contains the comprehensiveness and depth of functionality that you need for day-to-day maintenance requirements as well as continuous development and improvement.

Business Enabler Components



IFS' business enabler components let you create and enhance relationships, taking advantage of the latest web-based technologies. You can give employees, customers, suppliers, and other partners personalized, accurate, real-time information through easy-to-use role-based portals and built-for-purpose mobile solutions. IFS' business enabler components also provide integration with internal and external systems using web services while ensuring security, performance, and scalability.

About IFS

IFS (XSSE: IFS), the global enterprise applications company, provides ERP solutions which enable organizations to respond quickly to market changes. The solutions allow resources to be used in a more agile way to achieve better business performance and competitive advantage.

Founded in 1983, IFS has 2,600 employees worldwide. With IFS Applications™, now in its seventh generation, IFS has pioneered component-based ERP software. The component architecture provides solutions that are easier to implement, run and upgrade. IFS Applications is available in 54 countries in 20 languages.

IFS has over 550,000 users across seven key vertical sectors: aerospace & defense; automotive; high-tech; industrial manufacturing; process industries; construction, service & facilities management; and utilities & telecom. IFS Applications provides extended ERP functionality, including CRM, SCM, PLM, CPM, enterprise asset management, and MRO capabilities.

If you need further information, e-mail to info@ifsworld.com, contact your local IFS office or visit our web site:

www.IFSWORLD.com

IFS and all IFS product names are trademarks of IFS. The names of actual companies and products mentioned herein may be the trademarks of their respective owners. The example companies, organizations, products, domain names, email addresses, logos, people and events depicted herein are fictitious. No association with any real company, organization, product, domain name, email address, logo, person or event is intended or should be inferred. This document may contain statements of possible future functionality for IFS' software products and technology. Such statements of future functionality are for information purposes only and should not be interpreted as any commitment or representation.